



FITTING, USAGE AND MAINTENANCE INSTRUCTIONS IMPORTANT please read carefully	Ref: T187
	Iss:02
	Date:23/05/05

PRODUCT	3.5T UNIVERSAL COUPLING	CLASS	A50-X/S
Part Number	Approval No.	D Value	"S" Value
202014	e11 00 0648	17.5kN	250kg

RESPONSIBILITY **!!**

Accessories which are not properly fitted can be dangerous, with the potential for serious injury or damage. It is recommended that all accessories are fitted and maintained by professionally competent persons.

It is the responsibility of the vendor to ensure compatibility between all approved products i.e. ensures that the towing vehicle, towbar and coupling device have the correlating S-Value, D-Value, and requisite Class designation. If in doubt, contact the manufacturer of the respective product.

Only use Dixon-Bate spare parts such as spare pins, "R" clips etc.

If in doubt contact your supplier or Dixon-Bate Ltd.

EU Approved Products – Legal Requirements

- (i) Only fit EU type approved products to European type approved towing brackets (see approval No. above) and ensure that their S & D values are equal to or greater than the S & D value of the towing bracket.
- (ii) This is a European type approved accessory, (see approval No. above) if fitting to a European type approved towing bracket ensure that the S & D value of the towing bracket is equal to or less than the accessory's S & D value.
- (iii) When fitting an accessory whether EU approved or not to a non-EU type approved towing bracket refer to the towing bracket manufacturer's instructions and adhere to the towing capacities as stated in the vehicle manufacturer's handbook.

FITTING INSTRUCTIONS

Torque Settings	Bolt Size	Bolt length mm (inches)	Torque setting Nm
	M8 () M10 () M12 () M16 (X)	Fasteners not supplied with this product	240Nm Recommended
A Calibrated Torque wrench must be used			

Warning **!!**

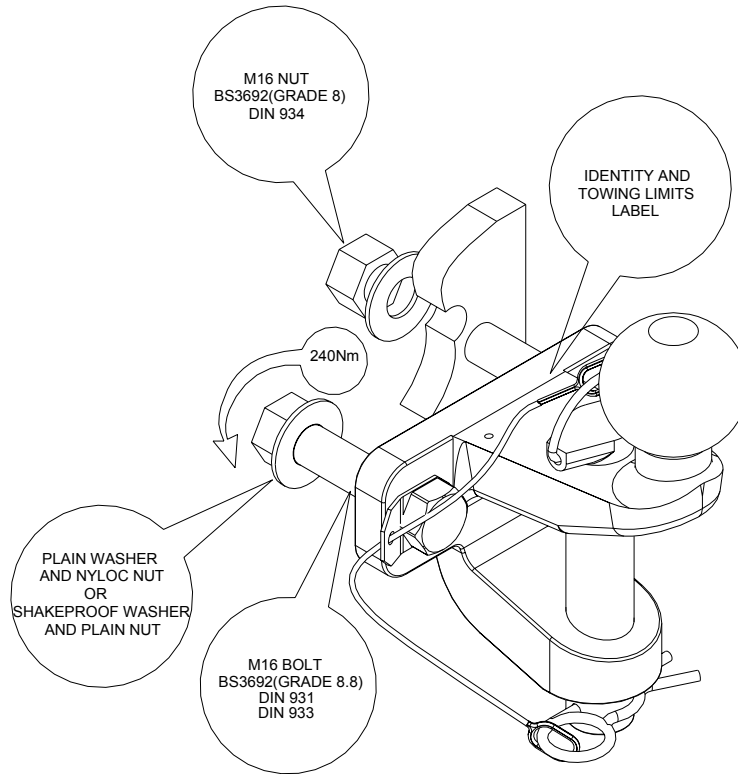
Before fitting ensure that all bolt/nut/washer contact surfaces are free from excess paint, dirt, underseal, weld splatters etc.

B. DIXON-BATE LTD
Unit 45, First Avenue, Deeside Industrial Park, Deeside, Flintshire
Tel: 01244 288925 Fax: 01244 288462 Email: technical@dixonbate.co.uk

Warning 

When fully tightened, ensure that the equivalent of half the bolt diameter protrudes through the nut. It is imperative to use fasteners with vibration proof washers under the nut.

Fitting



Towing Capacity

“D” Value 17kN	“S” Value 250kg
GVM: 3450k	GTM: 3500kg
Applies to Tow ball and Jaw	

USAGE, MAINTENANCE, SAFETY

- Using a calibrated torque wrench check tightness of all bolts/nuts initially after the first 500 miles (800 kms) of towing and then at 1000 miles (1600 kms) intervals.
- Check regularly all moving/contact parts for signs of wear and replace if necessary. Use only genuine parts.

IF IN DOUBT CONTACT DIXON-BATE

USER RESPONSIBILITY

It is your responsibility to ensure that you have been instructed in the safe usage, operation, and maintenance, of this product. Please ensure that these instructions are passed to subsequent owners/users of this product.

B. DIXON-BATE LTD
 Unit 45, First Avenue, Deeside Industrial Park, Deeside, Flintshire
 Tel: 01244 288925 Fax: 01244 288462 Email: technical@dixonbate.co.uk