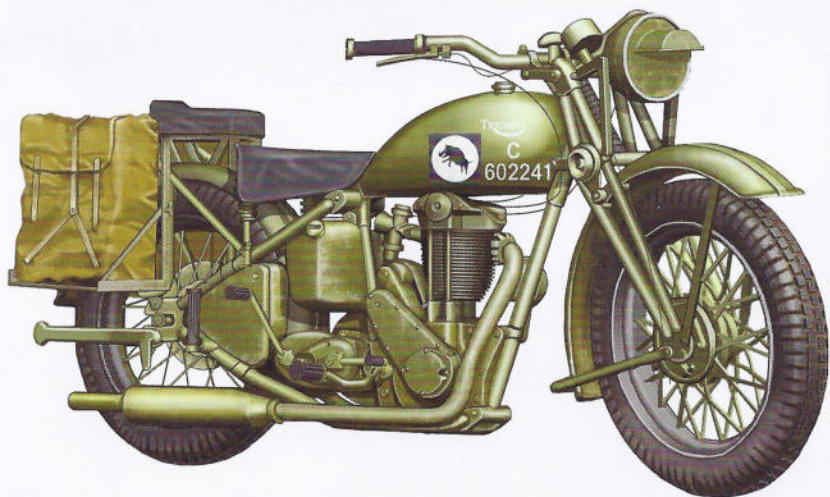


# TRIUMPH 3HW MOTORCYCLE W/BRITISH MP SET

## 凯旋牌3HW军用摩托车与英军宪兵组

### CB-35035 1/35 SCALE



Triumph Engineering Co introduced their 349cc 3H model in 1940, designed as a single-cylinder touring bike. With Britain at war, the 3H was soon ordered for the British Army as the 3HW, with some changes for military use. However in November 1940 the Triumph factory in Coventry was destroyed by German bombs and it was not until 1942 that the motor cycle began mass production. The 3HW was used mainly for communications and traffic direction. It was frequently the mount of Dispatch Riders who delivered written messages between army units. The 3HW was one of a number of motor cycles in the same class, which included BSA, Ariel and Norton. These bikes were used by all branches of the British Army, and from 1939 to 1945 over 450,000 had been supplied, including American Harley Davidsons and Indians.

Story by Phil Greenwood

Die Triumph Engineering Co führte 1940 das Modell 3H ein, es hatte 349 ccm und war ein Einzylinder Touren Motorrad. Mit dem Kriegseintritt Englands verwendete auch die britische Armee dieses Modell mit kleinen Änderungen (Farbe, zus. Satteltaschen etc.) als 3HW. Nach der Zerstörung der Triumph Fabrik in Coventry im November 1940 dauerte der Beginn der

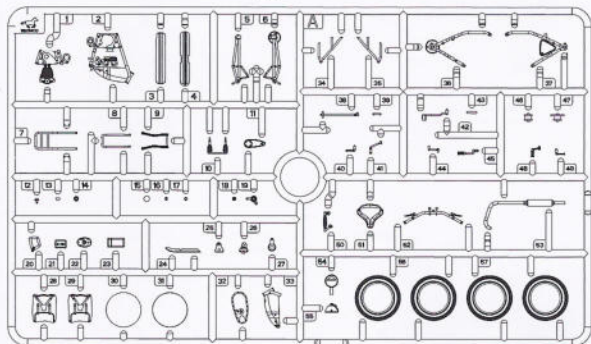
Massenfertigung jedoch bis 1942. Die 3HW wurde hauptsächlich als Verbindungs- und Polizeimotorrad eingesetzt. Motorradboten konnten so abhörsichere Nachrichten zwischen den Einheiten überbringen. Ausser der Triumph 3HW waren auch andere Marken wie BSA, Ariel oder Norton im Einsatz für die britische Armee. Die Stückzahl insgesamt betrug über 450000 Stück, darunter auch amerikanisches Material wie Harley Davidson und Indian.

© Translation Michael Knoblich Academy Europe

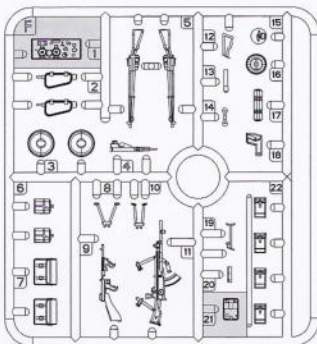
‘凯旋’汽车公司在1940年公开宣传了一款他们设计的349cc新型单缸缸称3H型的摩托车。当时处于战火洗礼中的英国，正急需各种物资供其部队使用，国防部在很短的时间内就选定了3H型作为军事用途，并对其稍作改装变为军用版的3HW型。然而在1940年11月设在考文垂的凯旋车厂遭受到德国轰炸机所破坏，否则无须待至1942年才开始量产这款军用摩托车。3HW主要使用于部队之间的通讯及交通控制方面。当时与3HW同类型的军用摩托车还有其他英国牌子如BSA、Ariel和Norton。从1939年到1945年间，总共有45万辆包括上述品牌及美国‘哈雷’牌和‘印地安人’牌的军用摩托车被分配到英军的所有军事单位使用。

#### PARTS LIST 零件展示表:

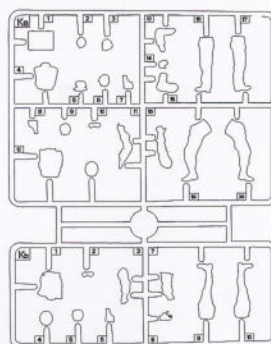
Ⓐ × 2



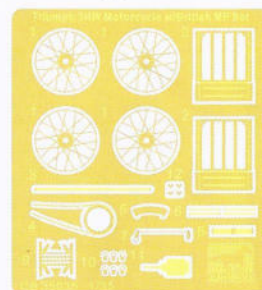
Ⓕ × 1



Ⓚ × 1



Ⓟ × 2



Ⓜ No use parts  
不要部件

#### ICON INSTRUCTION 图标说明:



Open Hole  
Loch bohren  
钻孔



Remove  
Abtrennen  
切除



2 Sets needed  
Vorgang wiederholen  
同样的制作二组



Bend  
Biegen  
曲折



Optional  
Auswahl  
可以选择采用



Apply Decal  
Decal anbringen  
贴上水贴纸



Instant Glue For Metal  
Sekundenkleber verwenden  
瞬间接着剂,金属用



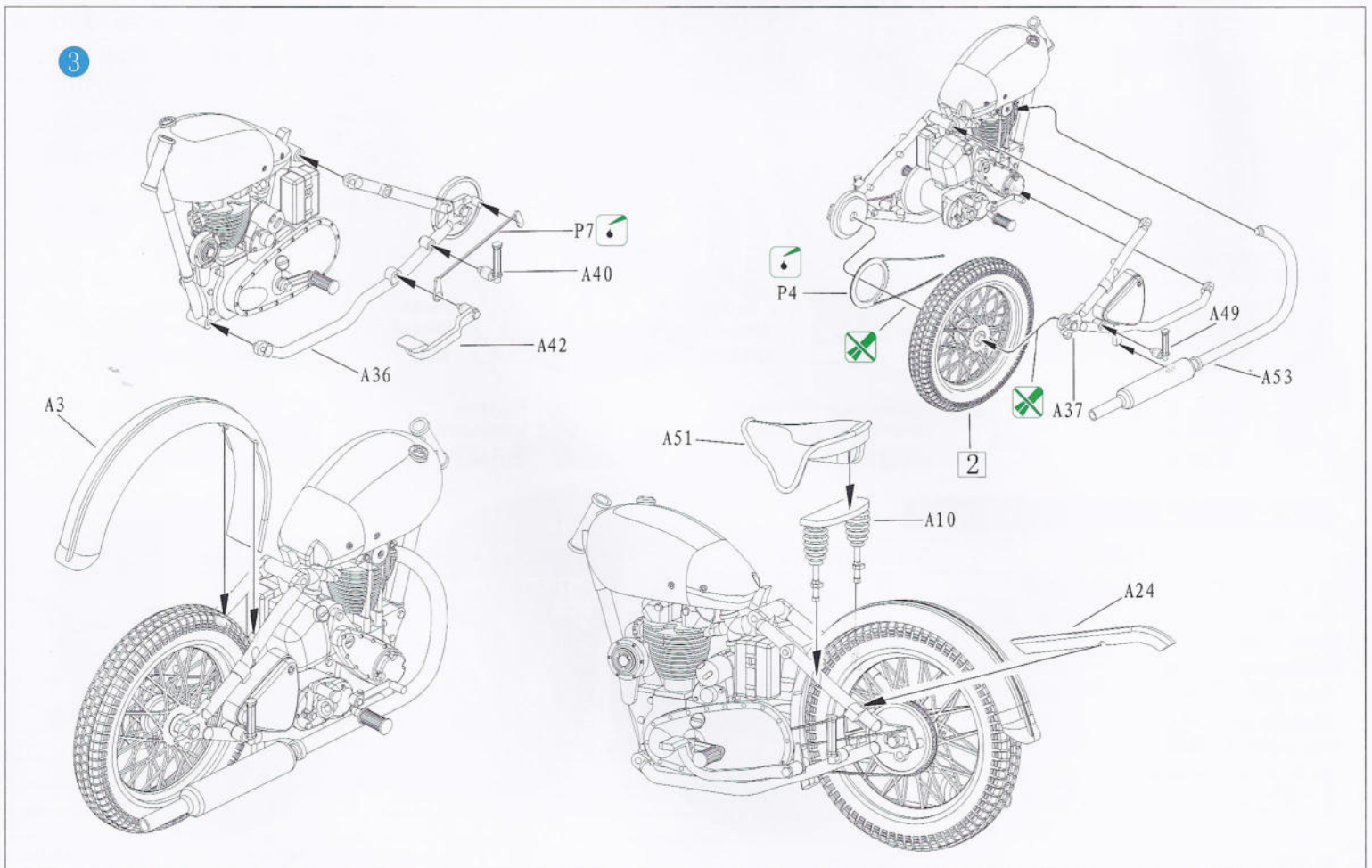
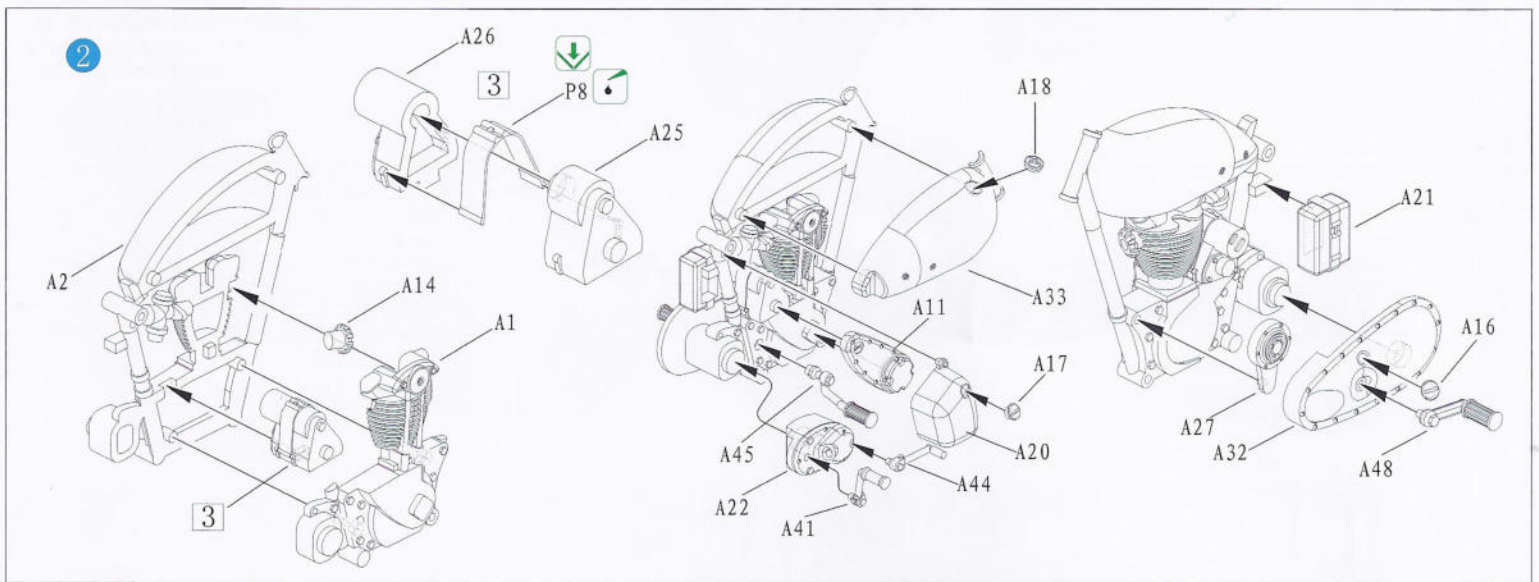
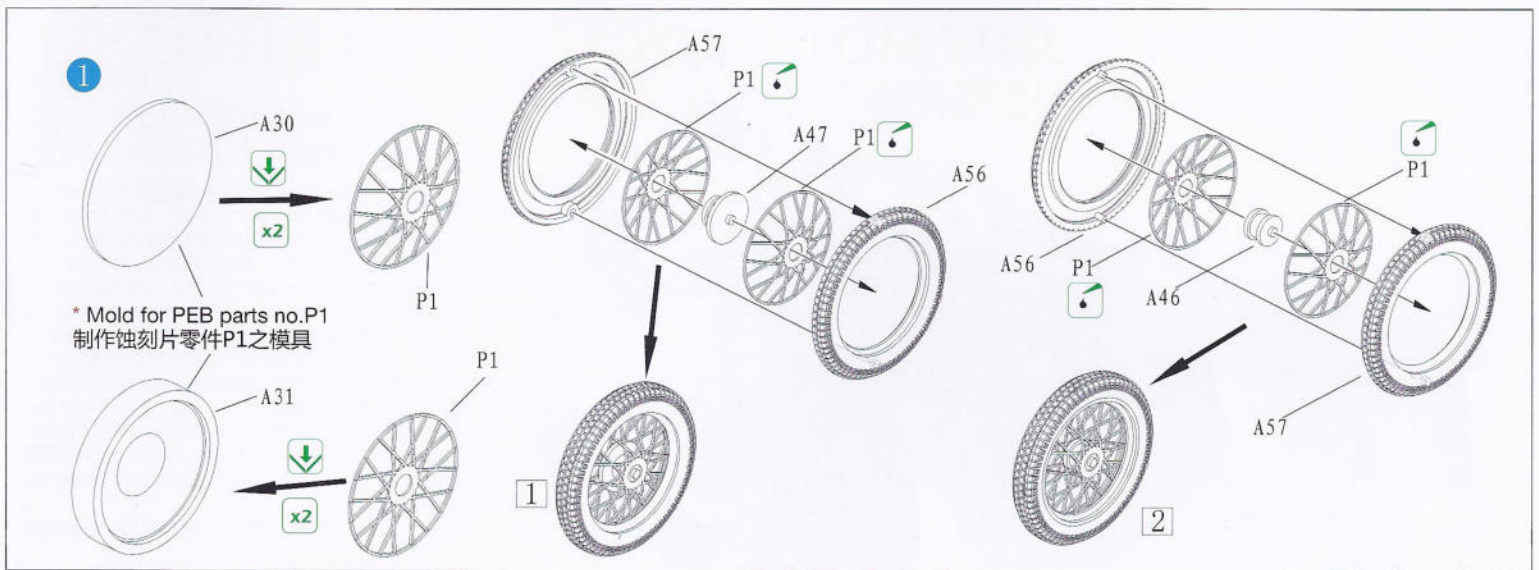
Fill Hole  
Verspachteln  
把孔填平

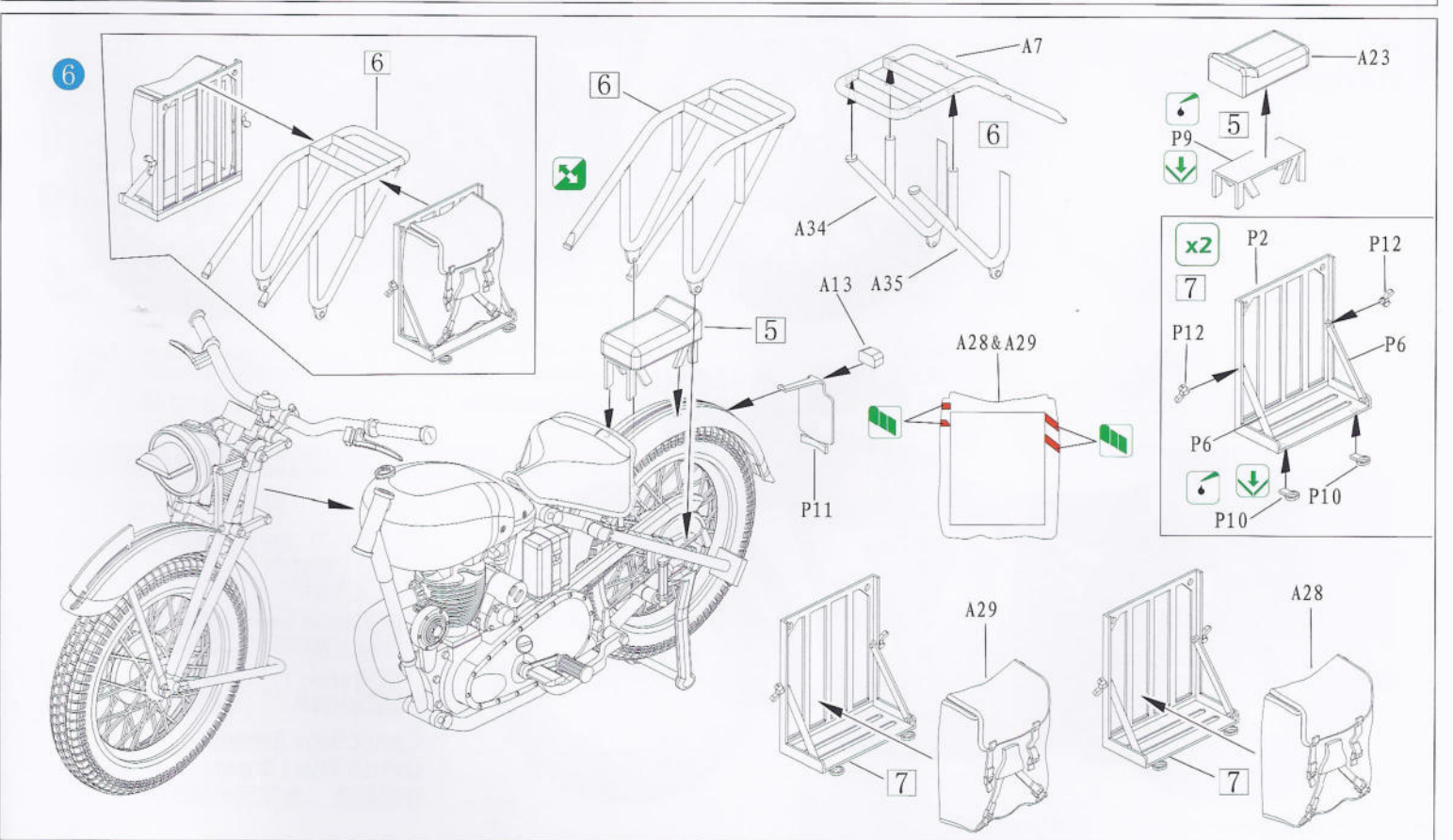
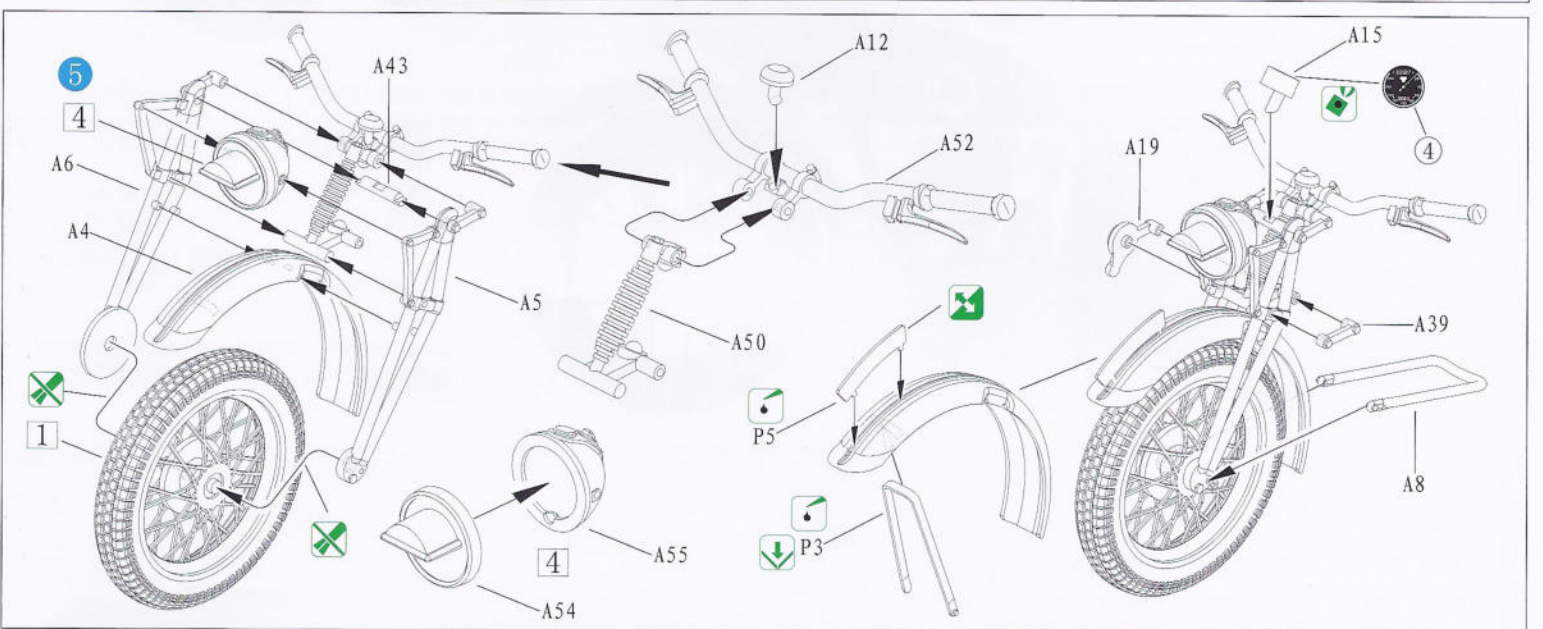
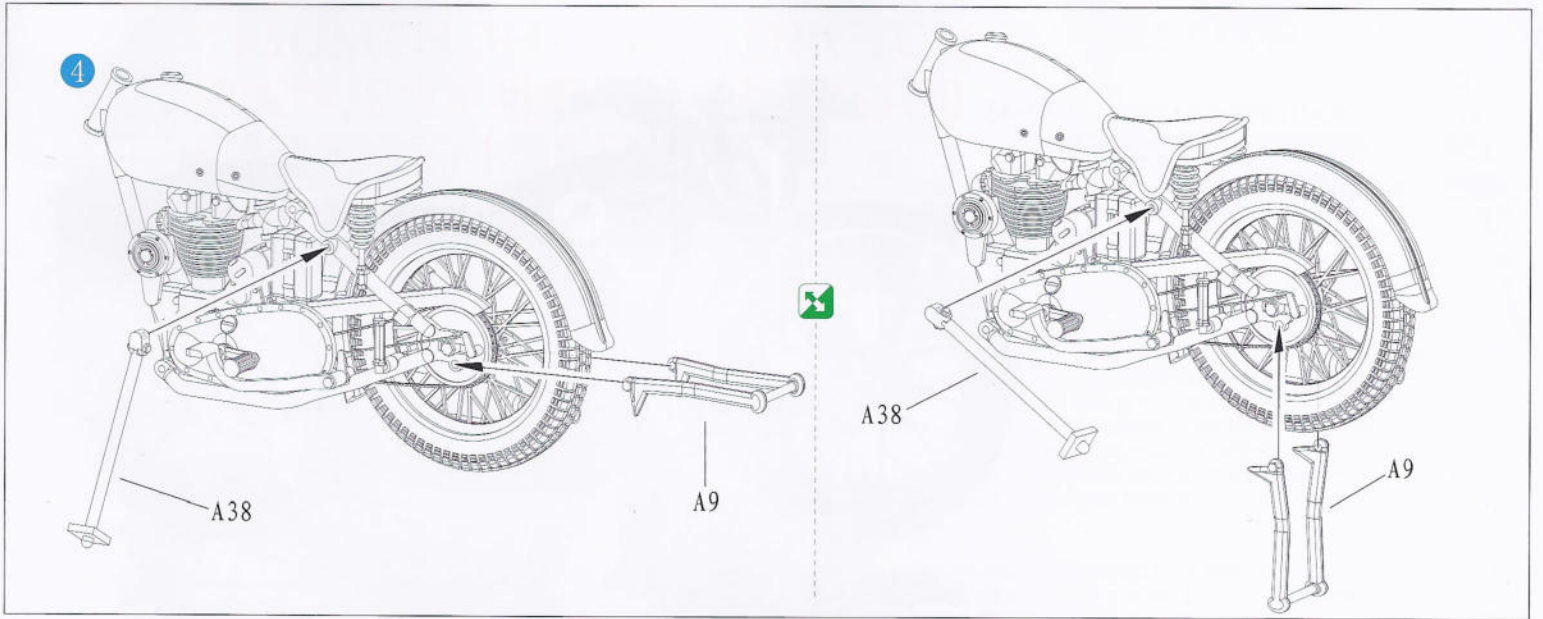


Do not cement  
Nicht kleben  
不用粘合

#### COLOR SUGGESTION 涂装指引:

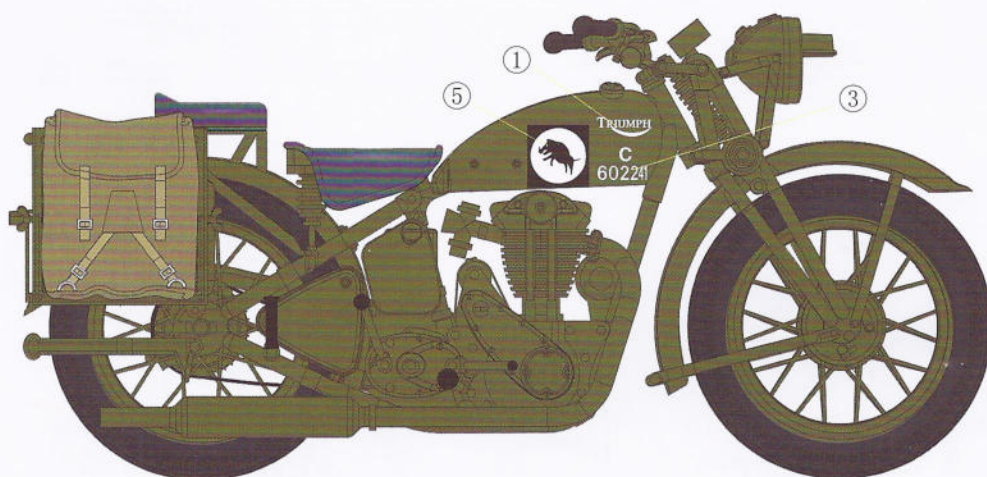
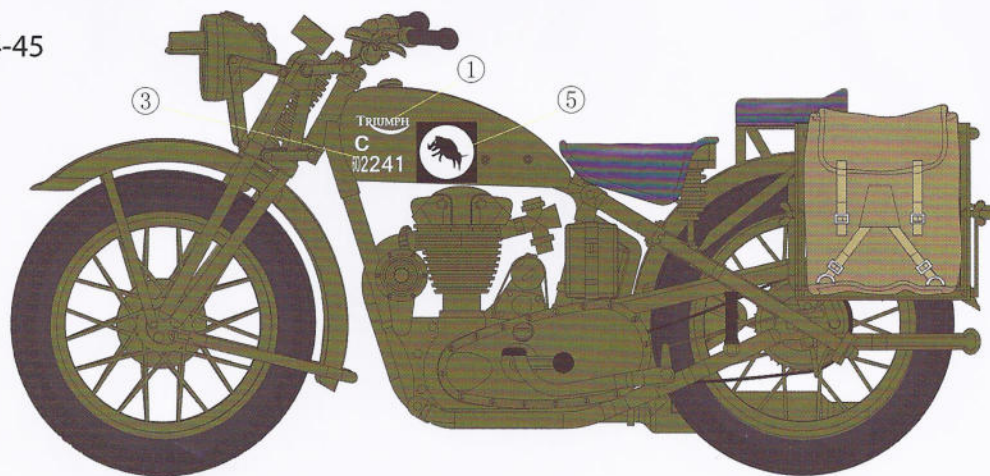
Color	涂料表	Gunze Sangyo	Hobby Color	Humbrol	Tamiya	
Tyre black	Reifen Schwarz	轮胎黑	H-77	C-137	85	/
Red Rot		红色	H-3	C-3	19	X-7
Steel Stahl		黑铁色	H-18	C-28	53	/
Red brown	Rotbraun	红棕色	H-47	C-41	160	XF-64
Olive drab	Oliv braun	橄榄褐	H-78	C-38	66	XF-62
Khaki Kaki		卡其色	H-81	C-55	26	XF-49
Flat white	Matt Weiß	消光白	H-11	C-62	34	XF-2
Khaki brown	Kaki braun	卡其棕	H-72	C-22	29	/
Semi-gloss black	Schwarz Seidenmatt	半光黑	/	C-82	/	/





Option 1:

XXX Corps, North West Europe, 1944-45  
 1944-45年在西北欧作战之英军  
 第三十军团属下车辆

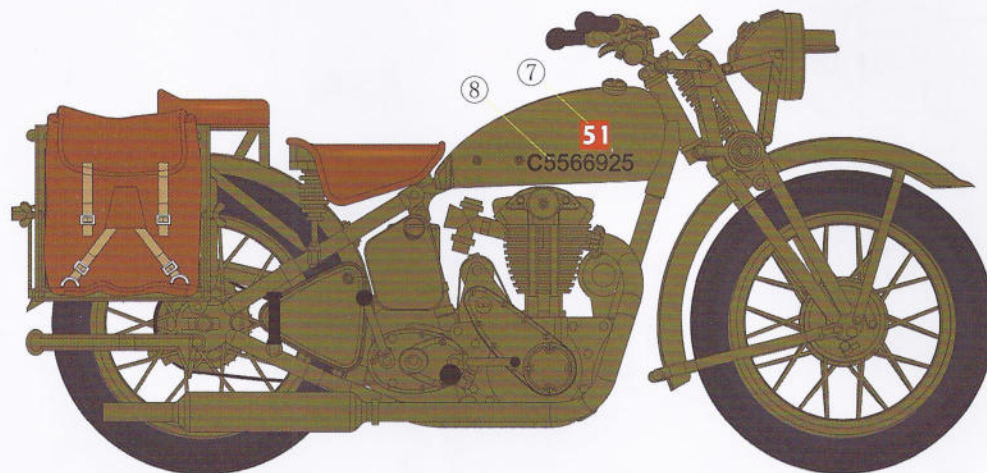
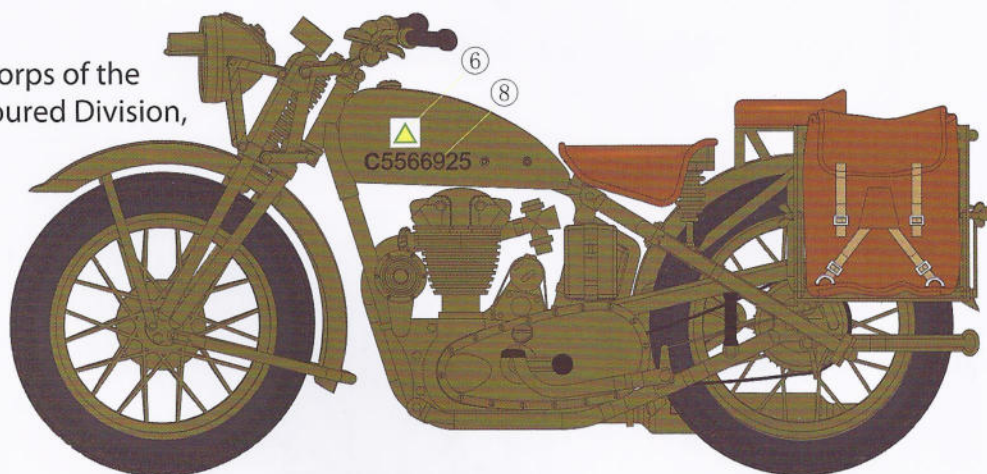


-  Semi-gloss black  
半光黑
-  Olive drab  
橄榄褐
-  Khaki  
卡其色
-  Flat white  
消光白
-  Tyre black  
轮胎黑

Camouflage Scheme:  
 Overall SCC British No.15 Olive Drad  
 迷彩颜色：全车涂英式15号橄榄褐色

Option 2:

108th Regiment, Royal Armoured Corps of the  
 10th Armoured Brigade, 42nd Armoured Division,  
 England, 1942-43  
 1942-43年驻在英格兰之  
 第42装甲师属下车辆



-  Flat white  
消光白
-  Khaki brown  
卡其棕色
-  Khaki  
卡其色
-  Red brown  
红棕色
-  Tyre black  
轮胎黑

Camouflage Scheme:  
 Overall khaki Brown  
 迷彩颜色：全车涂卡其棕色