

Fitting Instructions



BONNET SPARE WHEEL CARRIER

LAND-ROVER SERIES II, IIA and III 88"/109"

JULY 1989

Land Rover Parts Limited
International House
Bickenhill Lane
Birmingham B37 7HQ
England

Telephone: 021 781 6000
Telex: LAN PAR G 334685
Fax: 021 781 0253

KIT PART NO. 332972

The kit consists of a support plate which is riveted to the bonnet, a locking device which attaches to the support plate, four support rubbers for the wheel rim, two clamps which are reversible to suit wheels with large or small section tyres.

Padlock and keys for locking device must be supplied by customer if required.

Kit comprises:-

Description	Qty	Part No.
Spare wheel support	1	333458D
Dowel for spare wheel lock	1	348327D
Bolt (1/4" UNF x 7/8")	2	SH 604071LD
Plain washer	2	RTC 609D
Spring washer	2	3074D
Rivnut (1/4" UNF)	2	514929D
Rivet fixing support to bonnet	9	300783D
Clamp for spare wheel	2	347262D
Spiral bolt for spare wheel clamp	2	345779D
Split pin for bolt	2	3707D
Spare wheel support block	4	336473D
Screw (2BA x 5/8")	4	78177D
Plain washer	8	RTC615D
Spring washer	4	WM 702001LD
Nut (2BA)	4	RTC 608D

NOTE:

The Manufacturers reserve the right to vary their specifications with or without notice, and at such times and in such manner as they think fit. Major as well as minor changes may be involved in accordance with the Manufacturer's policy of constant product improvement.

Whilst every effort is made to ensure the accuracy of the particulars contained in this Fitting Instruction, neither the Manufacturer nor the Distributor or Dealer by whom this Fitting Instruction is supplied, shall in any circumstances be held liable for any inaccuracy or the consequences thereof.

PROCEDURE:

1. Remove bonnet.
2. Place the support, Part No. 333458D on the bonnet with the two clamping holes lying along the centre line of the bonnet and the support centre positioned 469.9 mm (18.5 ins) from the front edge of the bonnet. See Fig. 1.
3. Mark off and drill, using the support plate as a template, 9 holes with a No. 6 5.159 mm (.204") drill and two 38.1 mm (1.5 ins) diameter holes for the clamping bolts.
4. Fit Rivnuts as detailed in Fig. 2, to the two holes drilled in support plate, and using bolts SH 604071LD, spring washers WM 600041 LD (2) and plain washers RTC 609D (2) fix dowel to support plate.

330973D

Land Rover Parts Ltd
is a Managing Agent
for Land Rover UK Ltd

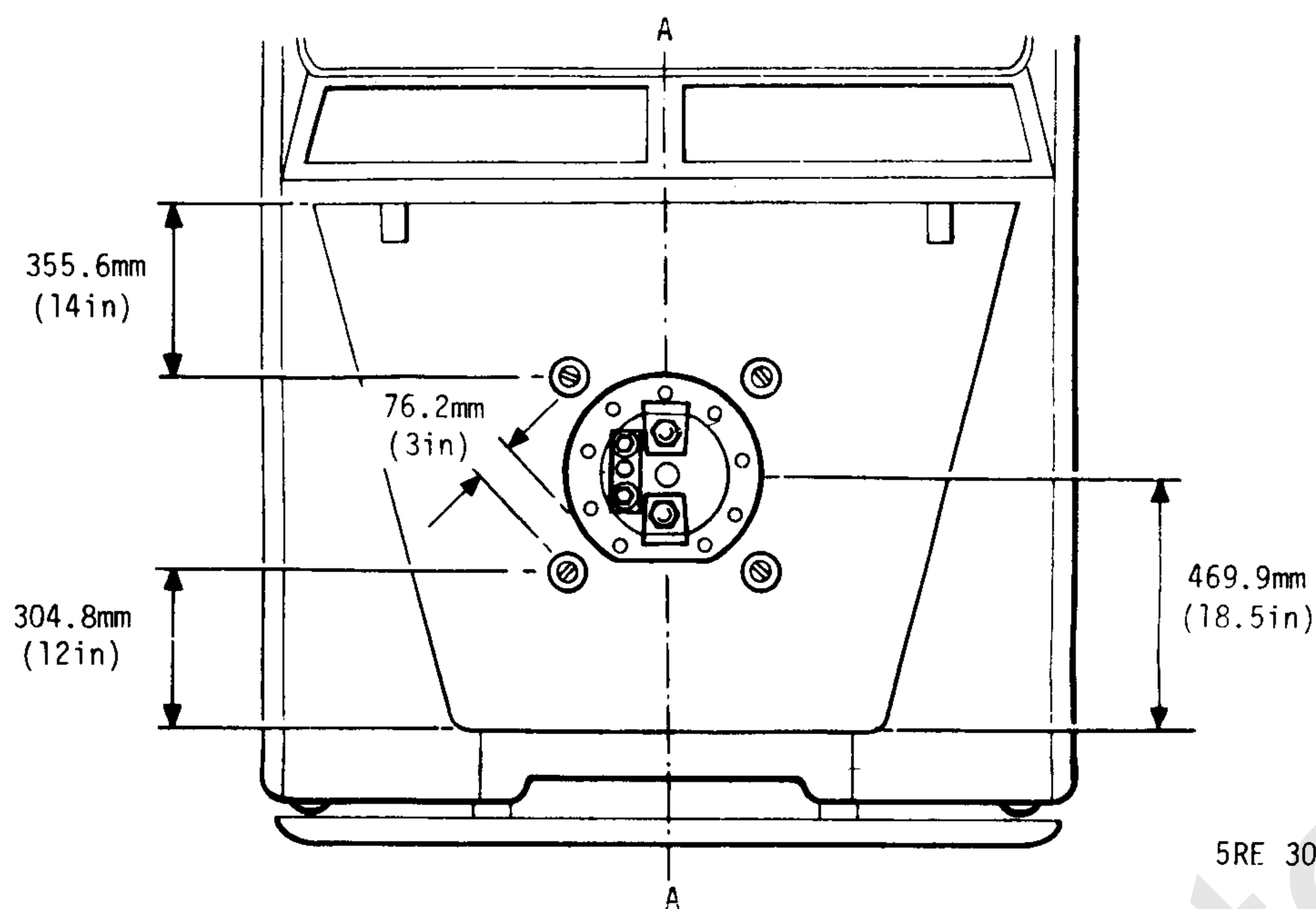
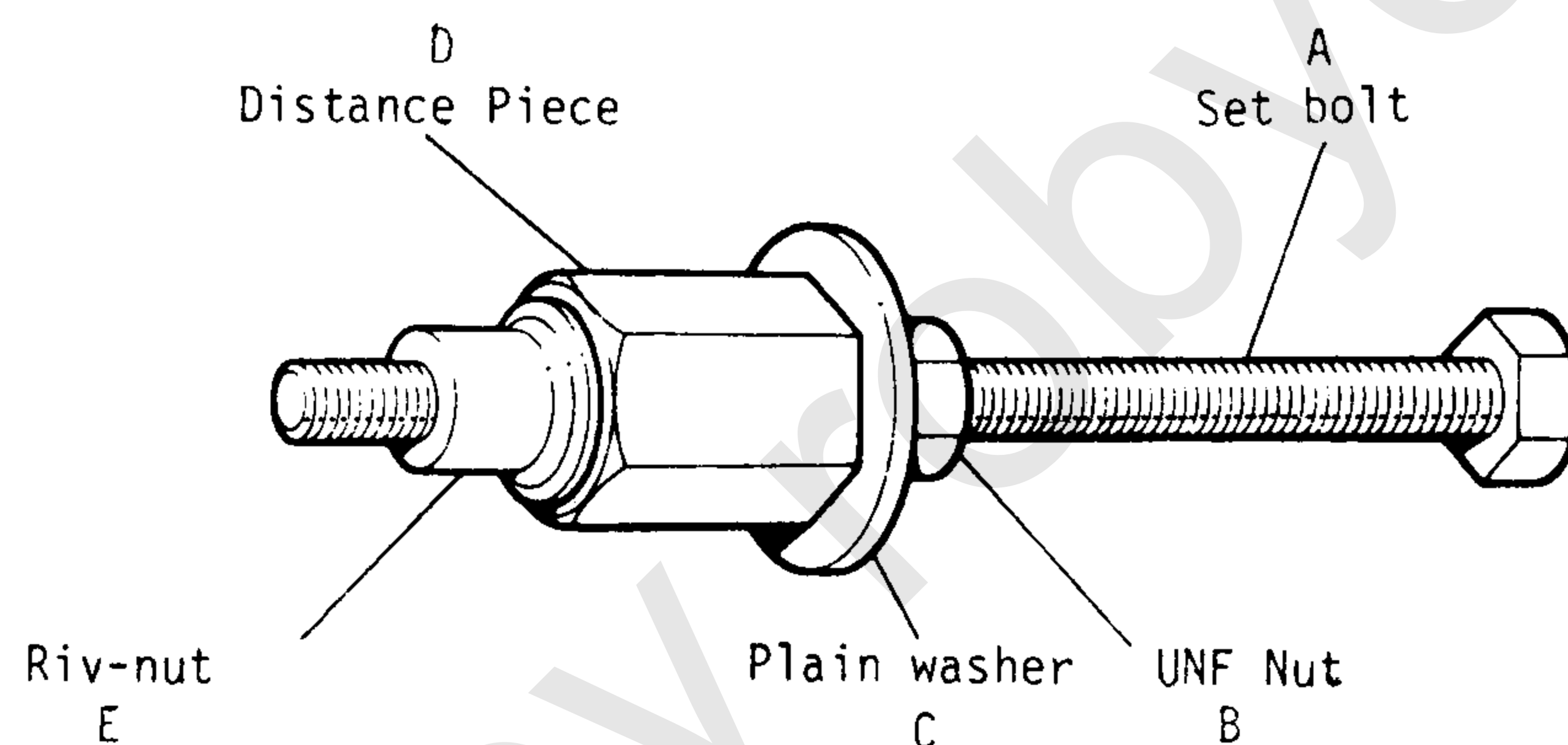


Fig. 1. Drilling instructions for fitting spare wheel carrier on bonnet.



5RE 262

Fig. 2. A — Bolt 1/4" UNF D — Nut 5/16" UNF with thread drilled clear
 B — Nut 1/4" UNF E — Rivnut
 C — Plain washer

Method of fitting Rivnuts to support plate.

Fit Rivnuts 514929D (2) to the holes drilled in the support plate, as follows:

- (a) Fit a nut and plain washer to a 1/4" UNF set bolt.
 - (b) Drill the thread clear of a 5/16" UNF nut, for use as a distance piece and slide it onto the set bolt and screw on fully a Rivnut 514929D.
 - (c) Insert the Rivnut into the drilled hole, keep the set bolt stationary and turn the 1/4" UNF nut clockwise for 2 1/2 turns approximately to expand the Rivnut.
 - (d) Ensure that the Rivnut is securely retained in the chassis sidemember, then remove the set bolt, nut, plain washer and distance piece.
5. Using rivets 300783D (9) fix the support plate to the bonnet.
 6. Fit the two bolts 345779D and clamps to the tapped holes in the support plate and split pin the bolts from underneath the bonnet.
 7. Position the 4 support rubbers as shown in Fig. 1. Mark and drill 4 holes 5.556mm (.218ins) diameter and using screws 78177D (4), plain washer RTC 615D (8), spring washers WM 702001L and nuts RTC 608D, secure the rubbers to the bonnet.
 8. Refit bonnet.