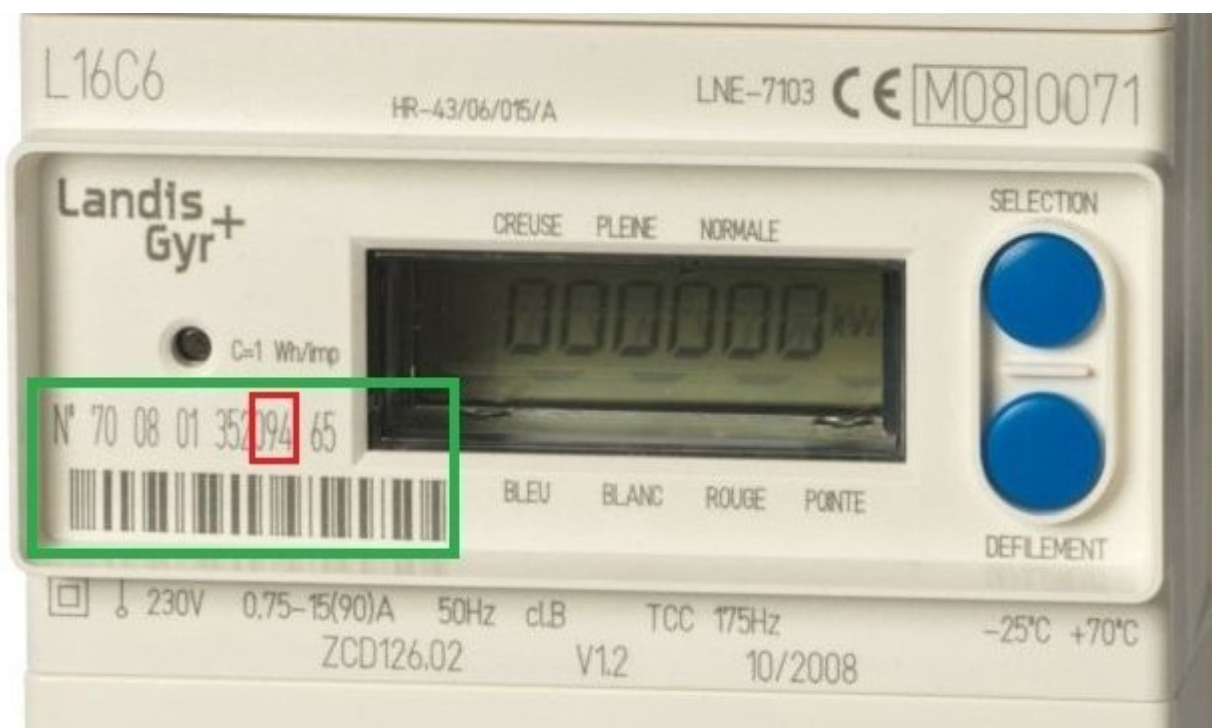


The SAGEM, Landis+Gyr meters and their lookalikes



Meter readings, energy consumption, the lower blue push button called “defilement”.

Base tariff: push once.

Heures pleines / heures creuses tariff (day/night): one push shows you the heures creuses (cheap rate), a second push the heures pleines.

Tempo tariff: with six pushes you’ll get all the details about heures pleines / heures creuses for the blue, white and red days.

The upper push button (Selection) shows more details about your subscription. See also the [SAGEM C 1000 manual](#). Ten or eleven menu items available.

Examples:

S3: your so called [puissance souscrite](#) in amps and kVA;

S4: your actual power consumption (no current clamp needed);

S5: maximum current ever.