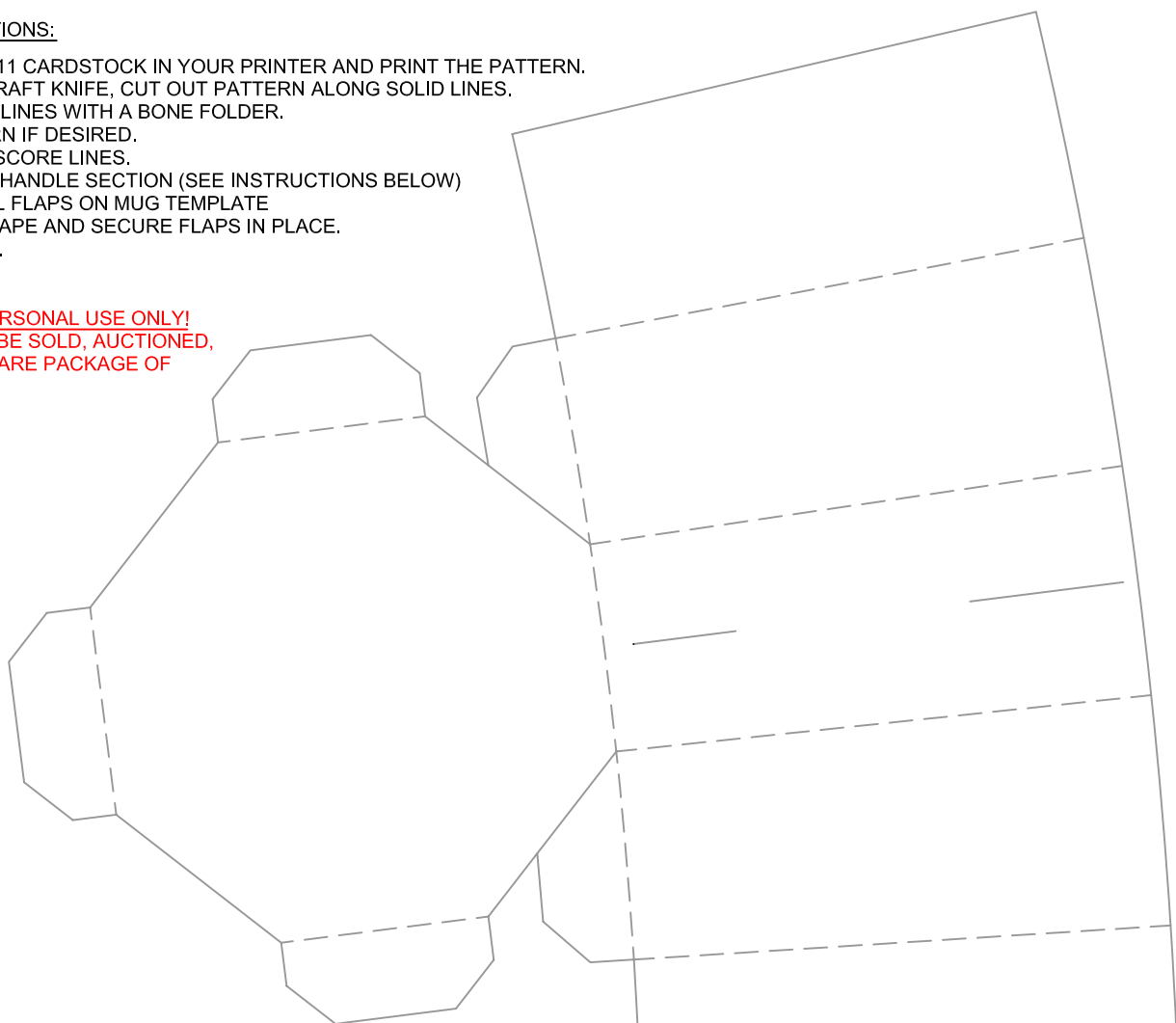


MUG ASSEMBLY INSTRUCTIONS:

1. PUT A SHEET OF 8 1/2 x 11 CARDSTOCK IN YOUR PRINTER AND PRINT THE PATTERN.
2. WITH SCISSORS OR A CRAFT KNIFE, CUT OUT PATTERN ALONG SOLID LINES.
3. SCORE ALONG DASHED LINES WITH A BONE FOLDER.
4. RUBBER STAMP PATTERN IF DESIRED.
5. FOLD PATTERN ALONG SCORE LINES.
6. ASSEMBLE AND INSERT HANDLE SECTION (SEE INSTRUCTIONS BELOW)
7. APPLY ADHESIVE TO ALL FLAPS ON MUG TEMPLATE
8. FOLD PATTERN INTO SHAPE AND SECURE FLAPS IN PLACE.
9. EMBELLISH AS DESIRED.

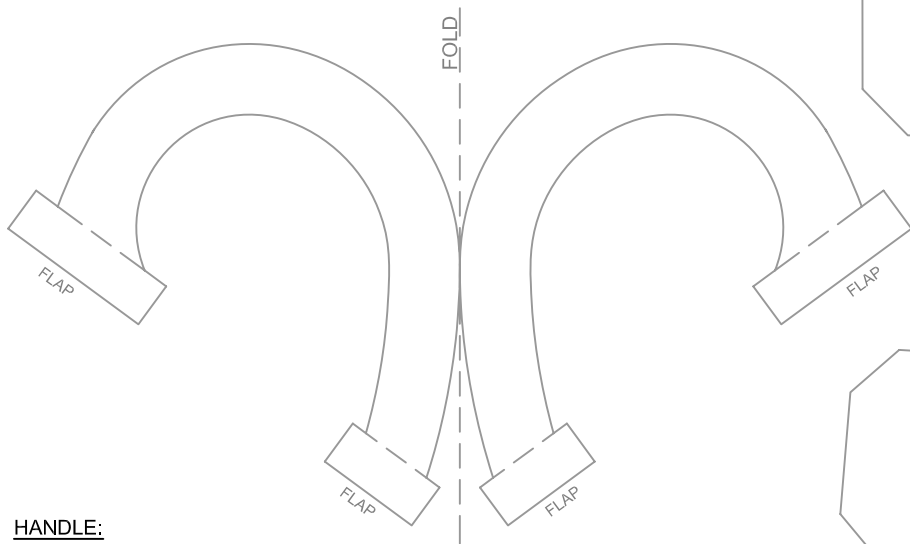
THIS TEMPLATE IS FOR PERSONAL USE ONLY!
THIS TEMPLATE MAY NOT BE SOLD, AUCTIONED,
OR INCLUDED IN A SOFTWARE PACKAGE OF
ANY KIND.



CUT LINE

FOLD LINE

© Sherry Graves



HANDLE:

1. CUT OUT HANDLE ALONG SOLID LINES.
2. SCORE ALONG DASHED LINES WITH A BONE FOLDER.
3. FOLD HANDLE PIECES TOGETHER ALONG THE CENTER FOLD.
4. GLUE HANDLE SECTIONS CLOSED. DO NOT GLUE FLAPS CLOSED.
5. INSERT HANDLE FLAPS INTO SLITS ON SIDE OF CUP.
6. FOLD FLAPS OPEN (LIKE BUTTERFLY WINGS) AND TAPE IN PLACE.